



SOLID OPTICS

**Global Supplier and Manufacturer of
Optical Networking Equipment & Solutions**



Get in touch



US Customer Support
+1 855 678 4271
infous@solid-optics.com



EU Customer Support
+31 (0) 88 342 3776
info@solid-optics.com

Who are we?

Solid Optics is a global supplier of a wide range of optical transceivers, multiplexers, OADMs and power meters; with a special focus on dark fiber CWDM & DWDM projects.

Quality is our number one priority -All our products undergo rigorous quality control procedures and are covered by our extensive warranty.

At Solid Optics, we are continually developing new products to meet our customers' changing needs. Our Multi-Fiber-Tool gives our customers the ability to recode our optics on-site and our innovative multiplexers provide simple and unique solutions for DWDM projects.



In addition to our standard product line, we offer custom solutions for: projects requiring multiplexers with additional features and ports, splice trays, underground enclosures, dispersion compensators and more.

Why choose Solid Optics?



EXPERTISE

We are experts in both passive CWDM & DWDM Technology and in coding for over 100 different network brands, helping our customers avoid costly integration mistakes and missed deployment deadlines.



INNOVATION

We continue to develop new products and tools to help improve our customers' network efficiency and allow for future adaptability.



QUALITY & WARRANTY

Our quality standards are among the highest in the industry, ensuring maximum network uptime for our customers.



SAVINGS

Our product line is priced to maximize network budget dollars, creating substantial savings compared to OEM network equipment brands.



FAST LEAD TIMES

Our lead times are typically much shorter than the OEM network equipment brands, allowing for faster integration, testing, and deployment to meet pressing project deadlines.



SERVICE & SUPPORT

Our extremely responsive Account Managers and highly trained support team offer robust support, designed to save our customers valuable upkeep time.

100% COMPATIBLE OPTICS



400G
100G
40G
10G
1G

BIDI

FTTH

EXTENSIVELY TESTED

QSFP
XFP
SFP

FIBER CAMERA

OPTICAL SPECTRUM ANALYZER

POWER METER

CLEANING TOOL

CWDM
DWDM
LWDM

OADM

PASSIVE MULTIPLEXER AND EDFAMUX

SFP+/XFP TUNABLE

FIBER SERVICE TOOLS



LWDM CWDM DWDM PASSIVE MUX OADM EDFAMUX (MUX+EDFA+DCM IN 1RU)



REGULAR



SFP 1G	WAVELENGTH(S) /CHANNEL(S)	POWERBUDGET dB	CONNECTOR	DEFAULT TEMPERATURE	MAXIMUM TEMPERATURE
GLC/SFP-1G-T-SO	-	-	RJ45	0 to +70 °C	-40 to +85 °C
SFP-1G-SX-SO	850 nm	7 dB	LC Duplex	0 to +70 °C	-40 to +85 °C
SFP-1G-LX-MMF-SO	1310 nm	10 dB	LC Duplex	0 to +70 °C	-40 to +85 °C
SFP-1G-LX-SO	1310 nm	10 dB	LC Duplex	0 to +70 °C	-40 to +85 °C
SFP-1G-EX-SO	1310 nm	15 dB	LC Duplex	0 to +70 °C	-40 to +85 °C
SFP-1G-ZX-SO	1550 nm	24 dB	LC Duplex	0 to +70 °C	-40 to +85 °C



SFP 10G	WAVELENGTH(S) /CHANNEL(S)	POWERBUDGET dB	CONNECTOR	DEFAULT TEMPERATURE	MAXIMUM TEMPERATURE
SFP-10G-T-SO	-	-	RJ45	0 to +70 °C	0 to +70 °C
SFP-10G-SR-SO	850 nm	5 dB	LC Duplex	0 to +70 °C	-40 to +85 °C
SFP-10G-IR-SIMPLEX-SO	1310 nm	3.5 dB	LC Simplex	0 to +70 °C	0 to +70 °C
SFP-10G-LR-SO	1310 nm	10 dB	LC Duplex	0 to +70 °C	-40 to +85 °C
SFP-10G-LRM-SO	1310 nm	3.5 dB	LC Duplex	0 to +70 °C	-40 to +85 °C
SFP-10G-ER-SO (1310/1550)	1550 nm	15 dB	LC Duplex	0 to +70 °C	-40 to +85 °C
SFP-10G-MR-1310-SO (Multi Range)	1310 nm	15 dB	LC Duplex	0 to +70 °C	-40 to +85 °C
SFP-10G-EZR-SO	1550 nm	26 dB	LC Duplex	0 to +70 °C	-40 to +85 °C
SFP-10G-ZR-SO	1550 nm	24 dB	LC Duplex	0 to +70 °C	-40 to +85 °C
CVR-XENPAK-SFP10G-SO	-	-	-	-	-
CVR-X2-SFP10G-SO	-	-	-	-	-



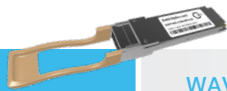
XFP 10G	WAVELENGTH(S) /CHANNEL(S)	POWERBUDGET dB	CONNECTOR	DEFAULT TEMPERATURE	MAXIMUM TEMPERATURE
XFP-10G-SR-SO	850 nm	4 dB	LC Duplex	0 to +70 °C	-40 to +85 °C
XFP-10G-LR-SO	1310 nm	6 dB	LC Duplex	0 to +70 °C	-40 to +85 °C
XFP-10G-ER-SO	1550 nm	15 dB	LC Duplex	0 to +70 °C	-40 to +85 °C
XFP-10G-ZR-SO	1550 nm	24 dB	LC Duplex	0 to +70 °C	-40 to +85 °C



SFP 2.5G	WAVELENGTH(S) /CHANNEL(S)	POWERBUDGET dB	CONNECTOR	DEFAULT TEMPERATURE	MAXIMUM TEMPERATURE
SFP-2.5G-SR-SO	850 nm	8 dB	LC Duplex	0 to +70 °C	-40 to +85 °C
SFP-2.5G-LR-SO	1310 nm	6 dB	LC Duplex	0 to +70 °C	-40 to +85 °C
SFP-2.5G-ER-SO	1550 nm	25 dB	LC Duplex	0 to +70 °C	-40 to +85 °C
SFP-2.5G-ZR-SO	1550 nm	26 dB	LC Duplex	0 to +70 °C	-40 to +85 °C



SFP 25G	WAVELENGTH(S) /CHANNEL(S)	POWERBUDGET dB	CONNECTOR	DEFAULT TEMPERATURE	MAXIMUM TEMPERATURE
SFP-25G-SR-SO	850 nm	2 dB	LC Duplex	0 to +70 °C	-40 to +85 °C
SFP-25G-LR-SO	1310 nm	6.3 dB	LC Duplex	0 to +70 °C	-40 to +85 °C
SFP-25G-ER-SO	1310 nm	19 dB	LC Duplex	0 to +70 °C	-40 to +85 °C



QSFP 40G	WAVELENGTH(S) /CHANNEL(S)	POWERBUDGET dB	CONNECTOR	DEFAULT TEMPERATURE	MAXIMUM TEMPERATURE
QSFP-40G-CSR4-MPO-SO	840-860 nm	2 dB	MPO12	0 to +70 °C	0 to +70 °C
QSFP-40G-SR4-MPO-SO	840-860 nm	2 dB	MPO12	0 to +70 °C	0 to +70 °C
QSFP-40G-IR4-SO	1310 nm	7.5 dB	LC Duplex	0 to +70 °C	0 to +70 °C
QSFP-40G-LX4-SO	1270/1290/1310/1330 nm	3.5 dB	LC Duplex	0 to +70 °C	0 to +70 °C
QSFP-40G-LR4-MPO-SO	1270/1290/1310/1330 nm	4.5 dB	MPO12	0 to +70 °C	0 to +70 °C
QSFP-40G-LR4-SO	1270/1290/1310/1330 nm	4.5 dB per lane	LC Duplex	0 to +70 °C	0 to +70 °C
QSFP-40G-ER4-SO	1270/1290/1310/1330 nm	16 dB	LC Duplex	0 to +70 °C	0 to +70 °C
CVR-QSFP-SFP10G-SO	-	-	-	-	-



QSFP 100G	WAVELENGTH(S) /CHANNEL(S)	POWERBUDGET dB	CONNECTOR	DEFAULT TEMPERATURE	MAXIMUM TEMPERATURE
QSFP-100G-SR4-MPO-SO	840-860 nm	2 dB	MPO12	0 to +70 °C	0 to +70 °C
QSFP-100G-IR-SO	1270/1290/1310/1330 nm	3.5 dB	LC Duplex	0 to +70 °C	0 to +70 °C
QSFP-100G-IR4-MPO-SO	1295.56/1300.05/ 1304.58/1309.14 nm	6.2 dB	MPO Duplex	0 to +70 °C	0 to +70 °C
QSFP-100G-LR4-SO	1295.56/1300.05/ 1304.58/1309.14 nm	6.2 dB	LC Duplex	0 to +70 °C	0 to +70 °C
QSFP-100G-ER4-SO 30km without FEC	1295.56/1300.05/ 1304.58/1309.14 nm	18 dB	LC Duplex	0 to +70 °C	0 to +70 °C
QSFP-100G-ER4+ -SO 40km without FEC	1295.56/1300.05/ 1304.58/1309.14 nm	18 dB	LC Duplex	0 to +70 °C	0 to +70 °C
QSFP-100G-DRI-SO	1310 nm	7.9 dB	LC Duplex	0 to +70 °C	0 to +70 °C
QSFP-100G-ZR4-SO	1295.56/1300.05/ 1304.58/1309.14 nm	30 dB	LC Duplex	-	-
CVR-QSFP28-SFP28-SO	-	-	-	-	-



QSFP DD 400G	WAVELENGTH(S) /CHANNEL(S)	POWERBUDGET dB	CONNECTOR	DEFAULT TEMPERATURE	MAXIMUM TEMPERATURE
QSFPDD-400G-SR8-MPO-SO	8 parallel lanes on 850nm	1.9 dB	MPO-16	0 to +70 °C	0 to +70 °C
QSFPDD-400G-DR4-MPO-SO	4 parallel lanes on 1310nm	3 dB	MPO-12	0 to +70 °C	0 to +70 °C
QSFPDD-400G-FR4-SO	1270/1290/1310/1330	4 dB	LC	0 to +70 °C	0 to +70 °C
QSFPDD-400G-LR4-SO	1270/1290/1310/1330	6.3 dB	LC	0 to +70 °C	0 to +70 °C



CFP	WAVELENGTH(S) /CHANNEL(S)	POWERBUDGET dB	CONNECTOR	DEFAULT TEMPERATURE	MAXIMUM TEMPERATURE
CFP-100G-SRI0-MPO-SO	840-860 nm	5 dB	MPO24	0 to +70 °C	0 to +70 °C
CFP-100G-LR4-SO	1295.56/1300.05/1304.58 /1309.14 nm	10 dB	LC Duplex	0 to +70 °C	0 to +70 °C
CFP-100G-ER4-SO	1295.56/1300.05/1304.58 /1309.14 nm	15 dB	LC Duplex	0 to +70 °C	0 to +70 °C
CFP-100G-ZR10-SO	1546.12/1546.92/1547.72 /1548.51/1549.32/1550.12 /1550.92/1551.72/1552.52 /1553.33 nm	24 dB	LC Duplex	0 to +70 °C	0 to +70 °C
CVR-CFP-QSFP28-SO	-	-	-	-	-



CFP2	WAVELENGTH(S) /CHANNEL(S)	POWERBUDGET dB	CONNECTOR	DEFAULT TEMPERATURE	MAXIMUM TEMPERATURE
CFP2-100G-SR10-MPO-SO	840-860 nm	5 dB	MPO24	0 to +70 °C	0 to +70 °C
CFP2-100G-LR4-SO	1295.56/1300.05/ 1304.58/1309.14 nm	10 dB	LC Duplex	0 to +70 °C	0 to +70 °C
CFP2-100G-ER4-SO	1295.56/1300.05/ 1304.58/1309.14 nm	15 dB	LC Duplex	0 to +70 °C	0 to +70 °C
CVR-CFP2-QSFP28-SO	-	-	-	-	-



CFP4	WAVELENGTH(S) /CHANNEL(S)	POWERBUDGET dB	CONNECTOR	DEFAULT TEMPERATURE	MAXIMUM TEMPERATURE
CFP4-100G-SR10-MPO-SO	840-860 nm	5 dB	MPO24	0 to +70 °C	0 to +70 °C
CFP4-100G-LR4-SO	1295.56/1300.05/ 1304.58/1309.14 nm	10 dB	LC Duplex	0 to +70 °C	0 to +70 °C
CFP4-100G-ER4-SO	1295.56/1300.05/ 1304.58/1309.14 nm	15 dB	LC Duplex	0 to +70 °C	0 to +70 °C



FIBER CHANNEL 8G	WAVELENGTH(S) /CHANNEL(S)	POWERBUDGET dB	CONNECTOR	DEFAULT TEMPERATURE	MAXIMUM TEMPERATURE
SFP-8G-FC-SR-SO	850 nm	5 dB	LC Duplex	0 to +70 °C	-40 to +85 °C
SFP-8G-FC-LR-SO	1310 nm	10 dB	LC Duplex	0 to +70 °C	-40 to +85 °C
SFP-8G-FC-ER-SO	1550 nm	15 dB	LC Duplex	0 to +70 °C	-40 to +85 °C
SFP-8G-FC-ZR-SO	1550 nm	24 dB	LC Duplex	0 to +70 °C	-40 to +85 °C



FIBER CHANNEL 16G	WAVELENGTH(S) /CHANNEL(S)	POWERBUDGET dB	CONNECTOR	DEFAULT TEMPERATURE	MAXIMUM TEMPERATURE
SFP-16G-FC-SR-SO	850 nm	7 dB	LC Duplex	0 to +70 °C	-40 to +85 °C
SFP-16G-FC-LR-SO	1310 nm	7 dB	LC Duplex	0 to +70 °C	-40 to +85 °C

BI-DIRECTIONAL



SFP 1G	WAVELENGTH(S) /CHANNEL(S)	POWERBUDGET dB	CONNECTOR	DEFAULT TEMPERATURE	MAXIMUM TEMPERATURE
SFP-1G-BX-MMF-SO	1490/1310 nm 1550/1310 nm	13 dB	LC Simplex	0 to +70 °C	-40 to +85 °C
SFP-1G-BXD/U20-SO	1490/1310 nm 1550/1310 nm	11 dB	LC/SC Simplex	0 to +70 °C	-40 to +85 °C
SFP-1G-BXD/U40-SO	1490/1310 nm 1550/1490 nm	19 dB	LC/SC Simplex	0 to +70 °C	-40 to +85 °C
SFP-1G-BXD/U80-SO	1550/1490 nm	26 dB	LC/SC Simplex	0 to +70 °C	-40 to +85 °C
SFP-1G-BXD/U120-SO	1550/1490 nm	32 dB	LC/SC Simplex	0 to +70 °C	-40 to +85 °C
SFP-1G-BXD/U160-SO	1550/1490 nm	34 dB	LC/SC Simplex	0 to +70 °C	-40 to +85 °C
SFP-1G-CWDM-BXD/U40-I-SO	1271-1611 nm	17 dB	LC Simplex	-40 to +85 °C	-40 to +85 °C
SFP-1G-CWDM-BXD/U40-OTDR-I-SO	1271-1611 nm	20 dB	LC Simplex	-40 to +85 °C	-40 to +85 °C



CSFP 1G	WAVELENGTH(S) /CHANNEL(S)	POWERBUDGET dB	CONNECTOR	DEFAULT TEMPERATURE	MAXIMUM TEMPERATURE
SFP-1G-2BXD/U20-SO	1490/1310 nm 1550/1310 nm	10.5 dB	LC Simplex	0 to +70 °C	-40 to +85 °C



SFP 2.5G	WAVELENGTH(S) /CHANNEL(S)	POWERBUDGET dB	CONNECTOR	DEFAULT TEMPERATURE	MAXIMUM TEMPERATURE
SFP-2.5G-BXD/U20-SO	1550/1310 nm	14 dB	LC/SC Simplex	0 to +70 °C	-40 to +85 °C
SFP-2.5G-BXD/U40-SO	1550/1490 nm	17 dB	LC/SC Simplex	0 to +70 °C	-40 to +85 °C
SFP-2.5G-BXD/U80-SO	1550/1490 nm	26 dB	LC/SC Simplex	0 to +70 °C	-40 to +85 °C



SFP 10G	WAVELENGTH(S) /CHANNEL(S)	POWERBUDGET dB	CONNECTOR	DEFAULT TEMPERATURE	MAXIMUM TEMPERATURE
SFP-10G-BXD/U20-SO	1330/1270 nm	9 dB	LC/SC Simplex	0 to +70 °C	-40 to +85 °C
SFP-10G-BXD/U40-SO	1330/1270 nm	15 dB	LC/SC Simplex	0 to +70 °C	-40 to +85 °C
SFP-10G-BXD/U60-SO	1330/1270 nm	20 dB	LC/SC Simplex	0 to +70 °C	-40 to +85 °C
SFP-10G-BXD/U80-SO	1550/1490 nm	23 dB	LC/SC Simplex	0 to +70 °C	-40 to +85 °C
SFP-10G-CWDM-BXD/U40-I-SO	1271-1611 nm	15 dB	LC/SC Simplex	0 to +70 °C	-40 to +85 °C



XFP 10G	WAVELENGTH(S) /CHANNEL(S)	POWERBUDGET dB	CONNECTOR	DEFAULT TEMPERATURE	MAXIMUM TEMPERATURE
XFP-10G-BXD/U20-SO	1330/1270 nm	10 dB	LC/SC Simplex	0 to +70 °C	-40 to +85 °C
XFP-10G-BXD/U40-SO	1330/1270 nm	15 dB	LC/SC Simplex	0 to +70 °C	-40 to +85 °C
XFP-10G-BXD/U60-SO	1330/1270 nm	20 dB	LC/SC Simplex	0 to +70 °C	-40 to +85 °C
XFP-10G-BXD/U80-SO	1550/1490 nm	24 dB	LC/SC Simplex	0 to +70 °C	-40 to +85 °C



SFP 25G	WAVELENGTH(S) /CHANNEL(S)	POWERBUDGET dB	CONNECTOR	DEFAULT TEMPERATURE	MAXIMUM TEMPERATURE
SFP-25G-BXD/U10-SO	1330/1270 nm	8.3 dB	LC/SC Simplex	0 to +70 °C	-40 to +85 °C
SFP-25G-BXD/U40-SO	1330/1270 nm	17.5 dB	LC/SC Simplex	0 to +70 °C	-40 to +85 °C



QSFP 100G	WAVELENGTH(S) /CHANNEL(S)	POWERBUDGET dB	CONNECTOR	DEFAULT TEMPERATURE	MAXIMUM TEMPERATURE
QSFP-100G-BX-IR-LCAPC-SO	1270/1290/1310/ 1330 nm	3.5 dB	LCAPC Simplex	0 to +70 °C	0 to +70 °C

CWDM



SFP 1G	WAVELENGTH(S) /CHANNEL(S)	POWERBUDGET dB	CONNECTOR	DEFAULT TEMPERATURE	MAXIMUM TEMPERATURE
SFP-1G-CWDM-24dB-SO	1270 -1610 nm	24 dB	LC Duplex	0 to +70 °C	-40 to +85 °C
SFP-1G-CWDM-32dB-SO	1270 -1610 nm	32 dB	LC Duplex	0 to +70 °C	0 to +70 °C
SFP-1G-CWDM-37dB-SO	1270 -1610 nm	37 dB	LC Duplex	0 to +70 °C	0 to +70 °C
SFP-1G-CWDM-41dB-SO	1270 -1610 nm	41 dB	LC Duplex	0 to +70 °C	0 to +70 °C



SFP 2.5G	WAVELENGTH(S) /CHANNEL(S)	POWERBUDGET dB	CONNECTOR	DEFAULT TEMPERATURE	MAXIMUM TEMPERATURE
SFP-2.5G-CWDM-24dB-SO	1270 -1610 nm	28 dB	LC Simplex	0 to +70 °C	-40 to +85 °C



SFP 10G	WAVELENGTH(S) /CHANNEL(S)	POWERBUDGET dB	CONNECTOR	DEFAULT TEMPERATURE	MAXIMUM TEMPERATURE
SFP-10G-CWDM-LR-SO	1270 -1610 nm	10 dB	LC Duplex	0 to +70 °C	-40 to +85 °C
SFP-10G-CWDM-ER-SO	1270 -1610 nm	15 dB	LC Duplex	0 to +70 °C	-40 to +85 °C
SFP-10G-CWDM-ZR-SO	1270 -1610 nm	20 dB	LC Duplex	0 to +70 °C	-40 to +85 °C
SFP-10G-CWDM-EZR-SO	1470 - 1550 nm	26 dB	LC Duplex	0 to +70 °C	-40 to +85 °C



XFP 10G	WAVELENGTH(S) /CHANNEL(S)	POWERBUDGET dB	CONNECTOR	DEFAULT TEMPERATURE	MAXIMUM TEMPERATURE
XFP-10G-CWDM-LR-SO	1270 -1610 nm	10 dB	LC Duplex	0 to +70 °C	-40 to +85 °C
XFP-10G-CWDM-ER-SO	1270 -1610 nm	15 dB	LC Duplex	0 to +70 °C	-40 to +85 °C
XFP-10G-CWDM-ZR-SO	1270 -1610 nm	20 dB	LC Duplex	0 to +70 °C	-40 to +85 °C



SFP 25G	WAVELENGTH(S) /CHANNEL(S)	POWERBUDGET dB	CONNECTOR	DEFAULT TEMPERATURE	MAXIMUM TEMPERATURE
SFP-25G-CWDM-LR-SO	1270-1570	7 dB	LC Duplex	0 to +70 °C	-40 to +85 °C
SFP-25G-CWDM-ER-SO	1270-1370	20 dB	LC Duplex	0 to +70 °C	-40 to +85 °C



QSFP 100G	WAVELENGTH(S) /CHANNEL(S)	POWERBUDGET dB	CONNECTOR	DEFAULT TEMPERATURE	MAXIMUM TEMPERATURE
QSFP-100G-CWDM-LR1-SO	1271-1331 nm	1271-1331 nm	LC Duplex	0 to +70 °C	0 to +70 °C



FIBER CHANNEL 8G	WAVELENGTH(S) /CHANNEL(S)	POWERBUDGET dB	CONNECTOR	DEFAULT TEMPERATURE	MAXIMUM TEMPERATURE
SFP-8G-FC-CWDM-LR-SO	1270 -1610 nm	10 dB	LC Duplex	0 to +70 °C	-40 to + 85 °C
SFP-8G-FC-CWDM-ER-SO	1270 -1610 nm	15 dB	LC Duplex	0 to +70 °C	-40 to + 85 °C



FIBER CHANNEL 16G	WAVELENGTH(S) /CHANNEL(S)	POWERBUDGET dB	CONNECTOR	DEFAULT TEMPERATURE	MAXIMUM TEMPERATURE
SFP-16G-FC-CWDM-LR-SO	1470-1610 nm	13 dB	LC Duplex	0 to +70 °C	0 to +70 °C
SFP-16G-FC-CWDM-ER-SO	1470-1610 nm	14 dB	LC Duplex	0 to +70 °C	0 to +70 °C

DWDM



SFP 1G 50/100Ghz	WAVELENGTH(S) /CHANNEL(S)	POWERBUDGET dB	CONNECTOR	DEFAULT TEMPERATURE	MAXIMUM TEMPERATURE
SFP-1G-DWDM-32dB-SO	100Ghz CH17-61	32 dB	LC Duplex	0 to +70 °C	-40 to + 85 °C
SFP-1G-DWDM-37dB-SO	100Ghz CH17-61	37 dB	LC Duplex	0 to +70 °C	-40 to + 85 °C
SFP-1G-5DWDM-32dB-SO	50Ghz CH17.5-CH65	32 dB	LC Duplex	0 to +70 °C	-40 to + 85 °C
SFP-1G-5DWDM-37dB-SO	50Ghz CH17.5-CH65	37 dB	LC Duplex	0 to +70 °C	-40 to + 85 °C



SFP 2.5G 100Ghz	WAVELENGTH(S) /CHANNEL(S)	POWERBUDGET dB	CONNECTOR	DEFAULT TEMPERATURE	MAXIMUM TEMPERATURE
SFP-2.5G-DWDM-32dB-SO	100Ghz CH17-61	30 dB	LC Duplex	0 to +70 °C	0 to +70 °C
SFP-2.5G-DWDM-37dB-SO	100Ghz CH17-61	37 dB	LC Duplex	0 to +70 °C	0 to +70 °C



SFP 10G 50/100Ghz	WAVELENGTH(S) /CHANNEL(S)	POWERBUDGET dB	CONNECTOR	DEFAULT TEMPERATURE	MAXIMUM TEMPERATURE
SFP-10G-DWDM-ER-SO	100Ghz CH17-61	15 dB	LC Duplex	0 to +70 °C	-40 to + 85 °C
SFP-10G-DWDM-EZR-SO	100Ghz CH17-61	26 dB	LC Duplex	0 to +70 °C	0 to +70 °C
SFP-10G-DWDM-ZR-SO	100Ghz CH17-61	24 dB	LC Duplex	0 to +70 °C	-40 to + 85 °C
SFP-10G-5DWDM-ER-SO	50Ghz CH17.5-CH65	15 dB	LC Duplex	0 to +70 °C	-40 to + 85 °C
SFP-10G-5DWDM-ZR-SO	50Ghz CH17.5-CH65	24 dB	LC Duplex	0 to +70 °C	-40 to + 85 °C

DWDM



XFP 10G 100Ghz	WAVELENGTH(S) /CHANNEL(S)	POWERBUDGET dB	CONNECTOR	DEFAULT TEMPERATURE	MAXIMUM TEMPERATURE
XFP-10G-DWDM-ER-SO	100Ghz CH17-61	15 dB	LC Duplex	0 to +70 °C	-40 to + 85 °C
XFP-10G-DWDM-ZR-SO	100Ghz CH17-61	24 dB	LC Duplex	0 to +70 °C	-40 to + 85 °C



Fiber Channel 8G	WAVELENGTH(S) /CHANNEL(S)	POWERBUDGET dB	CONNECTOR	DEFAULT TEMPERATURE	MAXIMUM TEMPERATURE
SFP-8G-FC-DWDM-ER-SO	100Ghz CH17-61	15 dB	LC Duplex	0 to +70 °C	-40 to + 85 °C
SFP-8G-FC-DWDM-ZR-SO	100Ghz CH17-61	24 dB	LC Duplex	0 to +70 °C	-40 to + 85 °C



Fiber Channel 16G	WAVELENGTH(S) /CHANNEL(S)	POWERBUDGET dB	CONNECTOR	DEFAULT TEMPERATURE	MAXIMUM TEMPERATURE
SFP-16G-FC-DWDM-ZR-SO	100Ghz CH17-61	24 dB	LC Duplex	0 to +70 °C	0 to +70 °C



QSFP 100G PAM4	WAVELENGTH(S) /CHANNEL(S)	POWERBUDGET dB	CONNECTOR	DEFAULT TEMPERATURE	MAXIMUM TEMPERATURE
QSFP-100G-DWDM-SO	100Ghz CH20-61	Require EDFA & DCM up to 80km	LC Duplex	0 to +70 °C	0 to +70 °C

LWDM



SFP 25G	WAVELENGTH(S) /CHANNEL(S)	POWERBUDGET dB	CONNECTOR	DEFAULT TEMPERATURE	MAXIMUM TEMPERATURE
SFP-25G-LWDM-LR-SO	1273 -1309 nm	10 dB	LC Duplex	0 to +70 °C	-40 to + 85 °C
SFP-25G-LWDM-ER-SO	1273 -1309 nm	15 dB	LC Duplex	0 to +70 °C	-40 to + 85 °C

TUNABLES



SFP 10G	WAVELENGTH(S) /CHANNEL(S)	POWERBUDGET dB	CONNECTOR	DEFAULT TEMPERATURE	MAXIMUM TEMPERATURE
SFP-10G-DWDM-TUN-ZR-SO	100 Ghz CH17-61 /1528.38-1568.77 nm	24 dB	LC Duplex	0 to +70 °C	-20 to +85 °C
SFP-10G-DWDM-ATUN-ZR-I-SO	100 Ghz CH17-61 /1528.38-1568.77 nm	24 dB	LC Duplex	-40 to + 85 °C	-40 to + 85 °C
SFP-10G-5DWDM-ATUN-ZR-SO	50 Ghz CH17-61 /1528.38-1568.77 nm	24 dB	LC Duplex	0 to +70 °C	-40 to + 85 °C
SFP-10G-5DWDM-ATUN-ZR-I-SO	50 Ghz CH17-61 /1528.38-1568.77 nm	24 dB	LC Duplex	-40 to + 85 °C	-40 to + 85 °C



XFP	WAVELENGTH(S) /CHANNEL(S)	POWERBUDGET dB	CONNECTOR	DEFAULT TEMPERATURE	MAXIMUM TEMPERATURE
XFP-10G-DWDM-TUN-ZR-SO	1100 Ghz CH17-61 /1528.38-1568.77 nm	24 dB	LC Duplex	0 to +70 °C	-20 to +85 °C



CFP DCO	WAVELENGTH(S) /CHANNEL(S)	POWERBUDGET dB	CONNECTOR	DEFAULT TEMPERATURE	MAXIMUM TEMPERATURE
CFP-200G-TUN-DCO-EM-SO	50Ghz CH17.5-CH65	31/25/23 dB (depends on modulation)	LC Duplex	0 to +70 °C	-40 to + 85 °C



CFP2 DCO	WAVELENGTH(S) /CHANNEL(S)	POWERBUDGET dB	CONNECTOR	DEFAULT TEMPERATURE	MAXIMUM TEMPERATURE
CFP2-200G-TUN-DCO-EM-SO	50Ghz CH17.5-CH65	31/25/23 dB (depends on modulation)	LC Duplex	0 to +70 °C	-40 to + 85 °C

Mux & OADM



CWDM MUX

- SO-CWDM-MUX-8CH+UPG+MON (1470-1610 nm)
- SO-CWDM-ULTRAMUX-8CH+UPG (1470-1610 nm)
- SO-CWDM-ULTRAMUX-18CH+MON (1270-1610 nm)

*Available as simplex, and/or with other casings, wavelengths/channels



CWDM OADM

- SO-CWDM-OADM1-(1270-1610nm)
- SO-CWDM-OADM2-(1270-1610nm)
- SO-CWDM-OADMX-(1270-1610nm)

*Available with up to 8 Channels or East Only



DWDM MUX

- SO-DWDM-MUX-CH28-35+UPG+1310W+MON
- SO-DWDM-MUX-CH20-35+UPG+1310W+MON
- SO-DWDM-MUX-40CH+1310W+MON
- SO-5DWDM-MUX-96CH

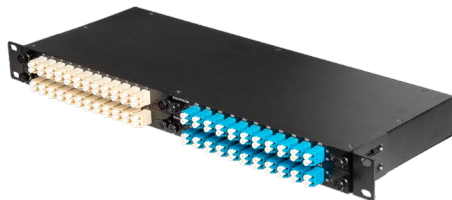
*Available as simplex, and/or with other casings, wavelengths/channels



DWDM OADM

- SO-DWDM-OADM1-(CH20-61)
- SO-DWDM-OADM2-(CH20-61)
- SO-DWDM-OADMX-(CH20-61)

*Available with up to 8 Channels or East Only



MOD4

- SO-CHASSIS-MOD4
- SO-MOD4-3xMPO/MMF(SM)-24xLC
- SO-MOD4-CWDM-MUX-8CH+UPG+1310W+MON
- SO-MOD4-DWDM-MUX-CH28-35+UPG+1310W+MON

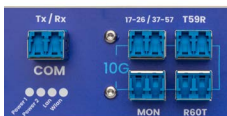


LWDM

- SO-LWDM-MUX-9CH+MON (1273-1309 nm)

EDFAMUX

The Solid Optics EDFAMUX is an all-in-one solution incorporating a DWDM Multiplexer, an EDFA (amplifier), and a Dispersion Compensator in a 1RU 19" casing



10G

- SO-DWDM-10X10G-EDFAMUX-140KM
- SO-DWDM-10X10G-EDFAMUX-200KM
- SO-DWDM-16X10G-EDFAMUX-140KM

100G

- SO-DWDM-8X100G-EDFAMUX-80KM
- SO-DWDM-8X100G-EDFAMUX-120KM
- SO-DWDM-16X100G-EDFAMUX-40KM
- SO-DWDM-16X100G-EDFAMUX-80KM

Tools

SPECTRUM ANALYZER

- SO-OSA-CWDM-18CH
- SO-OSA-DWDM-48CH
- SO-OSA-DWDM-96CH-50GHZ
- SO-OPTICAL-POWER-METER



MEDIA CONVERTER

- MEDIA CONVERTER-RJ45-SFP(100Mbit)
- MEDIA CONVERTER-RJ45-SFP(GIG)-MTU9600
- MEDIA CONVERTER-SFP-SFP(GIG)-MTU9600



FIBER MAINTENANCE

- ONE-CLICK-CLEANER-LC
- ONE-CLICK-CLEANER-SC
- ONE-CLICK-CLEANER-MPO
- CLEANING-KIT-FIBER-TIPS



MULTI-FIBER-TOOL 3

The Solid Optics Multi-Fiber-Tool was created by our engineering team to give network professionals increased flexibility on-site. The Multi-Fiber-Tool is used to recode our optics between brands, retune our DWDM tunable optics, and can be used to analyze and fix issues related to the coding of optics in the field – all of which saves our customers valuable time and money.

- ROBUST AND SLIM DESIGN, PORTABLE AND HANDHELD
- NO BATTERY NEEDED
- PLUG & PLAY
- COMPATIBLE WITH ANDROID, MAC, WINDOWS AND LINUX



RECODE

RETUNE DWDM

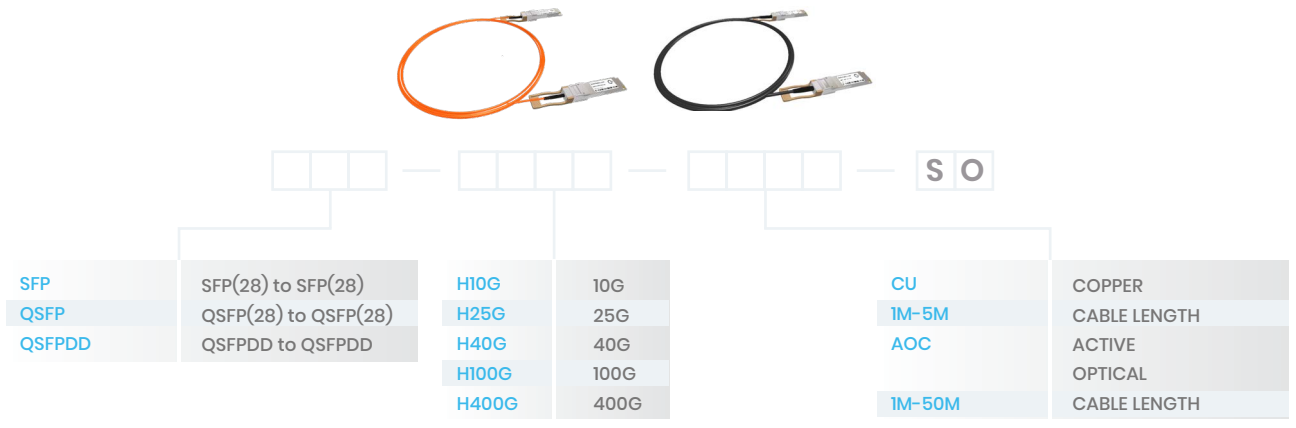


AOC & DAC

MPO PATCH CABLES



DIRECT ATTACH CABLES



BREAK OUT CABLES

